

472 ① 11-12

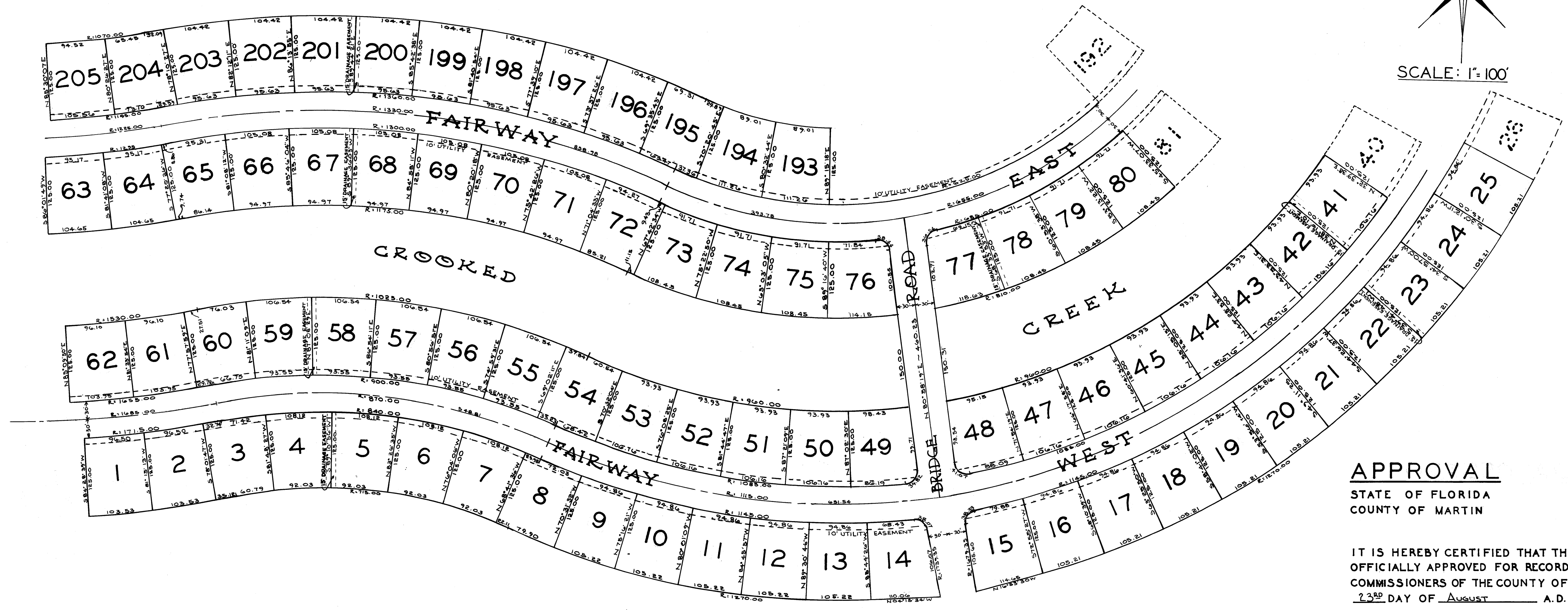
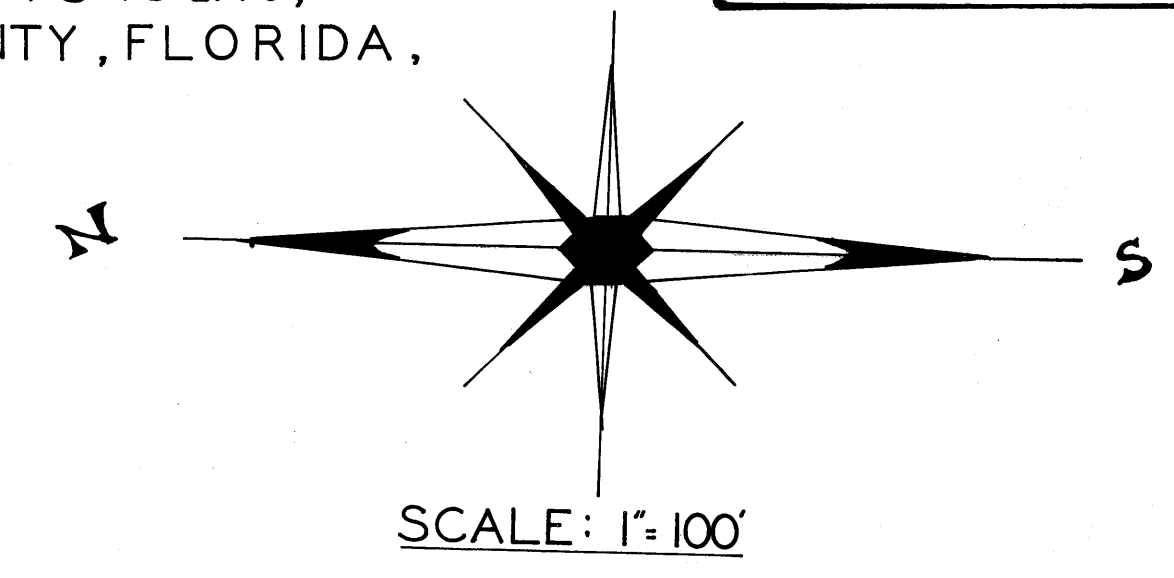
FILED FOR RECORD
1968 AUG 26 PM 2:02
CLERK OF CIRCUIT COURT
D.C.

THE YACHT & COUNTRY CLUB OF STUART

I HEREBY CERTIFY THAT I HAVE EXAMINED THE ATTACHED PLAT AND FIND THAT IT COMPLIES IN FORM WITH CHAPTER 177 FLORIDA STATUTES AND WAS FILED FOR RECORD IN PLAT BOOK 4, PAGE 72, THIS 26th DAY OF AUG. 1968 IN THE OFFICE OF THE CLERK OF THE CIRCUIT COURT AT STUART, MARTIN COUNTY, FLORIDA.
CLERK OF THE CIRCUIT COURT
DOROTHY PIERCE BY *Park*
FILE NO. 130663

SHEET 1 OF 3

A SUBDIVISION OF THAT PART OF PORT SEWALL, PLAT BOOK 3, PAGE 8, PUBLIC RECORDS OF PALM BEACH COUNTY, FLORIDA, LYING WEST OF THIRD STREET SOUTH, EAST OF TWELFTH STREET SOUTH AND SOUTH OF THE UNNAMED AVENUE 50.00 FEET IN WIDTH, THE CENTER LINE OF WHICH IS 315.00 FEET SOUTH OF THE CENTER LINE OF MIAMI AVENUE AND ALL OF THE NORTH $\frac{9}{15}$ THS OF LOTS 18 & 19, COMMISSIONER'S SUBDIVISION OF MILES OR HANSON GRANT PLAT BOOK 1, PAGE 11, PUBLIC RECORDS OF PALM BEACH COUNTY, FLORIDA, LYING BETWEEN STATE ROAD A-1-A AND ST. LUCIE BOULEVARD.



APPROVAL
STATE OF FLORIDA
COUNTY OF MARTIN

IT IS HEREBY CERTIFIED THAT THIS PLAT HAS BEEN OFFICIALLY APPROVED FOR RECORD BY THE BOARD OF COUNTY COMMISSIONERS OF THE COUNTY OF MARTIN, FLORIDA, THIS 23RD DAY OF AUGUST A. D. 1968.

APPROVED: *R. J. Slides*
COUNTY ENGINEER
Paul E. Siffert
CHAIRMAN PLANNING & ZONING BOARD
Thomas E. Powers
CHAIRMAN BOARD OF COUNTY COMMISSIONERS

STAFFORD & BROCK
ENGINEERS & SURVEYORS
38 EAST OCEAN BLVD
STUART, FLORIDA